

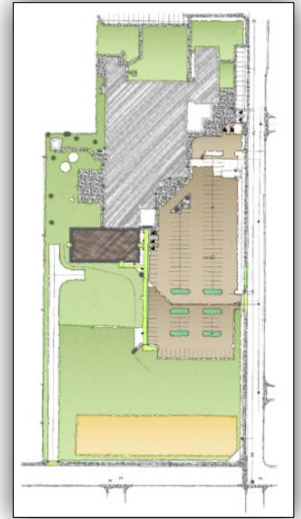
ZION LUTHERAN CHURCH AND SCHOOL

BRIGHTON, COLORADO



Staying Ahead of the Curve

As a member of the project design team, Crestone Consultants played an important role in the site design and coordination of the Zion Lutheran Church & School Expansion project. Our ability to quickly identify, communicate, and integrate newly adopted City of Brighton rules and regulations during the planning stages of the project. This allowed the design and ownership teams to efficiently stay ahead of the regulations curve and develop an effective site plan for the church & school expansion project while also providing flexibility for future expansions on this 7.5 acre campus. The Crestone team was able to adapt to the new rules and regulations and produce complete submittal documents which were approved in a shorter than expected timeframe to allow the project construction to start on schedule.



The Project

The \$1 million Zion Lutheran Church & School Expansion project consisted of a 10,000 sf classroom wing addition to the existing 50,000 sf church and school facility. Site improvements were designed for both the expansion and the overall campus. These included improving pedestrian accessibility, improving parking circulation and the addition of 50 parking stalls, fire access upgrades, utility upgrades, and playground improvements which were incorporated with stormwater management system upgrades. Additionally, future building locations, access, utilities, and stormwater management concepts were developed to create a master plan for future expansions.

Crestone Performed Services

Project responsibilities included providing full coordination and support to the design team, the owner, and the City of Brighton throughout the site development and building permits process. Specific services included:

- Construction Documents
- Coordination/Processing
- Cost Models
- Ejector System Design
- Parking Lot and Access Design
- Project Management
- Specifications
- Stormwater Management Design
- Utility System Analysis/Design

**Please contact us for additional project information, references, and recommendations.*

CRESTONE CONSULTANTS, LLC
civil engineering solutions